

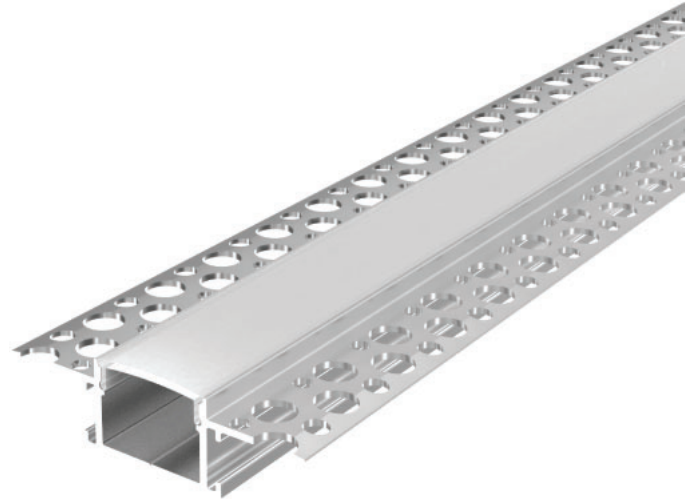
PRODUCT DESCRIPTION

For 1/2" drywall. Designed to be recessed into drywall, the AL 071 aluminum channel is suitable for ceiling, wall mount and decorative applications.

ORDERING CODE

AL MODEL LENGTH(in)

AL - 071 - 118



SPECIFICATION

Dimension 61.5mm x 14mm

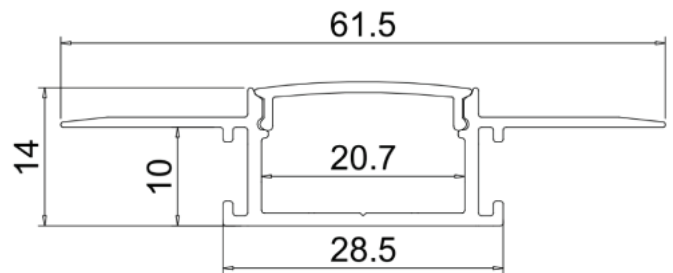
Length 118"

Internal Width 20.7mm

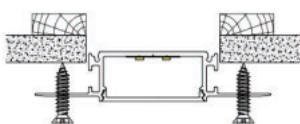
Drywall Thickness 1/2"

Color Silver

DIMENSION



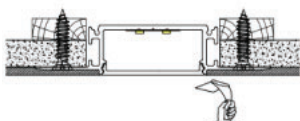
INSTALLATION



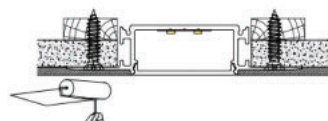
STEP1



STEP2



STEP3



STEP4

ACCESSORIES



AL -071 -EC