



Phecda SD2 Acoustic

Linear Suspension Direct

2" Direct Line | 4ft -31W | 8ft -61W

Specification Sheet

Project Name :

Location :

Quantity :

Date :

Note :



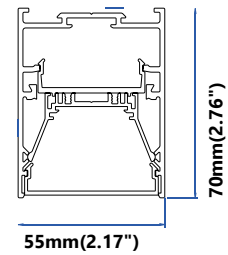
Feature

The minimalist linear design of Line collection offers a contemporary appeal and a pleasant ambient light. It is available in surface mount, Wall mount or suspended versions. The acrylic diffuser, enclosed in an extruded aluminum housing, evenly distributes the light and totally eliminates bright dots. The Line comes in a range of sizes from 4 feet and 8 feet to adapt to various ceiling areas.

Specification

- **CRI:** 90+
- **Beam Angle:** 96°
- **IP Grade:** IP40
- **Efficiency:** 725~775lm/ft
- **Dimming Range:** 0-10V / 1~100%
- **Voltage [V]:** AC100-277V / 50~60Hz
- **Operating Temperature:** -20°C ~ +45°C
- **Warranty:** 5 years

Size



Order Information

Example: SD2-S-4-30K-BK-EMC

Model SD2A	Mounting	Lenght	CCT	Finish
SD2A - 2" aperture	C - Ceiling mount S - Suspension W - Wall mount	4 - 4 Feet 8 - 8 feet	30K - 3000K 35K - 3500K 40K - 4000K	04 - Light Gray 09 - Yellow 15 - Red 18 - Brown 21 - Green 23 - Dark Gray 26 - Gray 30 - Blue

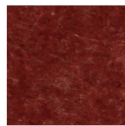
Finish



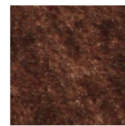
GSY-04



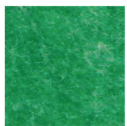
GSY-09



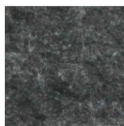
GSY-15



GSY-18



GSY-21



GSY-23



GSY-26



GSY-30

Performance

Size	CCT	Power[W]	Lumen[lm]
4ft	3000K	31	2900
	3500K	31	3000
	4000K	31	3100
8ft	3000K	61	5800
	3500K	61	5978
	4000K	61	6155

