



Cambered Neon Tube

NNR25 | 24VDC | IP67
4.4W/ft | 290lm/ft | Ra90+

Specification Sheet

Project Name :
Location :
Quantity :
Date :
Note :

Product Description

Cambered neon tube is the ideal light source for striking statement lighting. The LED is encased in high light transmittance environment friendly silicon, using integrated extrusion molding process. It is resistant to saline solutions, acids, alkali, corrosive gases and UV.

Order Information

Example: S2835-24V-60-24-IP20

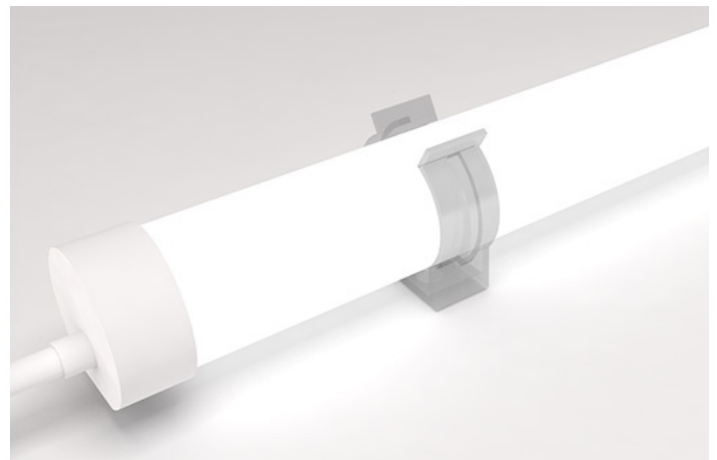
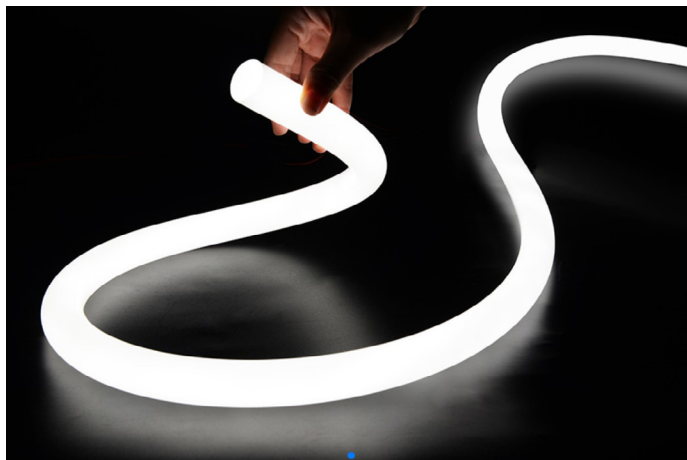
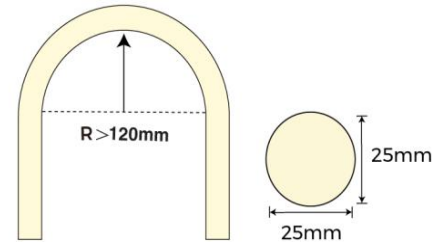
Series	Voltage	Colour Temperature	Length
NNR25	24V		5
Side Bend Neon Strip	24VDC Input	23 - 2300K, CRI>90 27 - 2700K, CRI>90 30 - 3000K, CRI>90 40 - 4000K, CRI>90 CT - 23K-40K, CRI>90	5 - 5m (16.4ft)

Specifications

Length Per Roll:	5M (16.4ft)
Input Power:	24VDC
Rated Power:	14.4W/m (4.4W/ft)
CRI(Ra):	90+
LED Type:	SMT 3528
FPC Material:	3oz Copper
Wrapping Material	PVC
Environment	Wet locations (IP67)

Total Wattage:	72W
Dimmable:	Yes
Cutting Interval:	50 mm (2")
Lumen Maintenance:	70% @ 60,000 Hrs
Max Run:	5m (16.4ft)
Luminous Flux:	259 lm/ft @ 2300K 289 lm/ft @ 2700K 289 lm/ft @ 3000K 289 lm/ft @ 4000K 228 lm/ft @ 23K-40K

Dimension



Cambered Neon Tube

Drivers

ELV Dimmable Driver



JVC-24V-96-ELV
96W LED ELV, TRIAC dimmable
class 2 driver 24V 4A

0-10V Dimmable Driver



JVC-24V-96-DIM
96W LED 0-10V dimmable
class 2 driver 24V 4A



JVC-24V-192-ELV
192W (2x96W) ELV, TRIAC dimmable
class 2 driver 24V 2x4A



JVC-24V-192-DIM
192W (2x96W) 0-10V dimmable
class 2 driver 24V 2x4A



JVC-24V-288-ELV
288W (3x96W) ELV, TRIAC dimmable
class 2 driver 24V 3x4A



JVC-24V-288-DIM
288W (3x96W) 0-10V dimmable
class 2 driver 24V 3x4A