



MIZAR RS9

Integrated LED Lighting Fixture
Adjustable Anti-glare Baffle

Product Description

Mizar RS9 deep recessed lights offers eight choice of oblique baffles to complement the interior design style, as well as to eliminate glare. The combination M2 high power light engine, the stylish diecast trim and the reliable driver makes this recessed lighting fixture an ideal choice to meet all functional and aesthetic requirements of residential and commercial applications.

Order Information

Example: RS9-9-25T-VN-B-RG-E-43HC

Model RS9	Power	COB	Beam Angle	Trim Color
Integrated Recessed LED Engine Fixture	9 - 9W 12 - 12W	25T - 2500K, CRI>95 27T - 2700K, CRI>95 30T - 3000K, CRI>95 35T - 3500K, CRI>95 30C - 3000K, CRI>90 40C - 4000K, CRI>90 DW - Dim to Warm 2200K-3000K	VN - Very Narrow Spot NS - Narrow Spot SP - Spot FD - Flood	B - Black W - White
Baffles		Dimming	Accessories	
RG - Rose Gold GP - Polished Gold SP - Polished Silver BP - Polished Black	GM - Matt Gold BM - Matt Black SM - Matt Silver WM - Matt White	E - ELV/Triac Dimming V - 0-10V Dimming	43HC - 43mm. honeycomb louvre RP - Rough-in Plate	

* 9° is available only in 9W

Features

LED Light Source:

Available in a wide range of colour temperatures with high color fidelity and gamut to bring out vivid colors.

Optics: TIR lens collimate light into precisely controlled beam shapes ranging from 13° narrow spot to 60° wide flood.

Driver: Flicker free TRIAC or 0-10V silicon filled driver for maximum lifespan.

Heat Sink:

Cold forged engine grade pin fin aluminum heat sink provides optimal heat. Management in a small package.

Specification

CCT: 2500K/2700K/3000K/3500K/4000K

CRI: >90 / >95

Tilt: +40°/-0°

Dimming: ELV

Total lumen output max: 1300 lm @12W

Delivered lumen max: 937 lm @ 12W

Power consumption: 9W / 12W

Power factor: >0.9

Power Driver Type: Constant Current

Input voltage: 120V, 60Hz

Approved locations: IP20, Dry

Lumen maintenance: 70% @ 60,000 Hrs

THD <20%

Certification: cETLus

Warranty: 5 years limited warranty

Dimensions

Cut Out: 3 inch

Outer Diameter: 3.2 inch

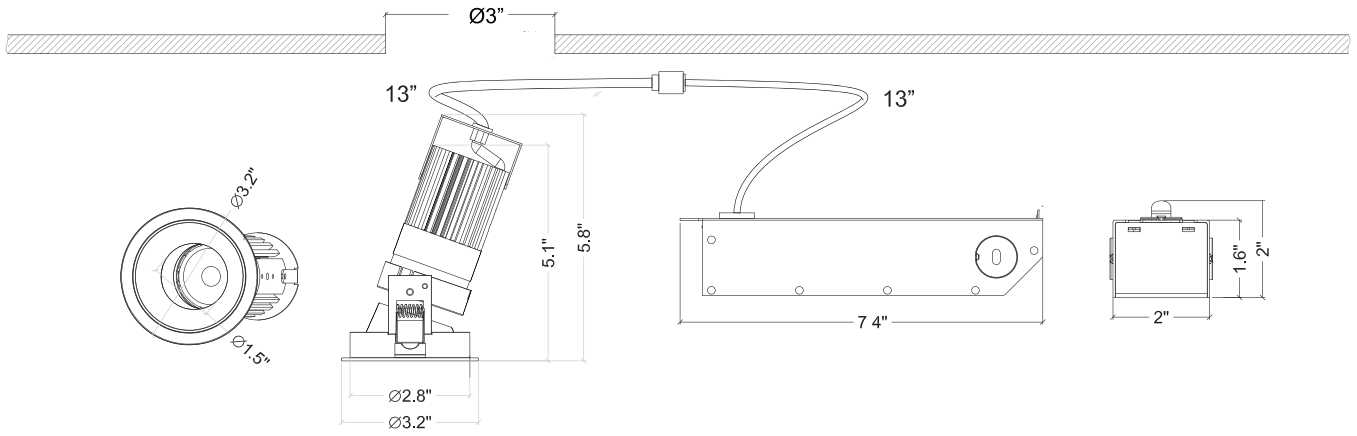
Ceiling Clearance Required: 5.8 inch

Project Name :
Location :
Quantity :
Date :
Note :



Consult website for detail:
www.vyvydlighting.ca/warranty

Dimensions



Baffles



SP - Polished Silver



BP - Polished Black



SM - Matt Silver



BM - Matt Black



GP - Polished Gold



RG - Rose Gold



GM - Matt Gold



WM - Matt White

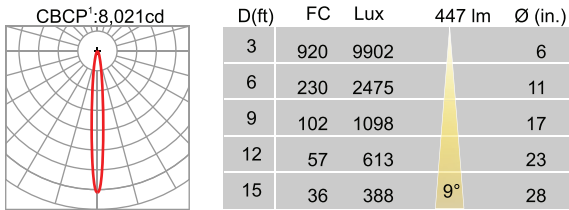
Photometric Data

Data shown is measured for 30C light source. Multiply CBCP, FC and Lux by the following adjustment factors for other light sources

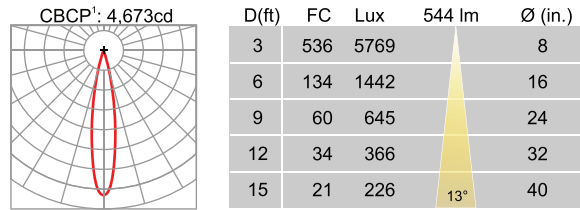
Light Source	25C	27T	30T	35T	30C	40C
Adjustment factors	0.88	0.92	0.98	1.02	1.00	1.05

9W

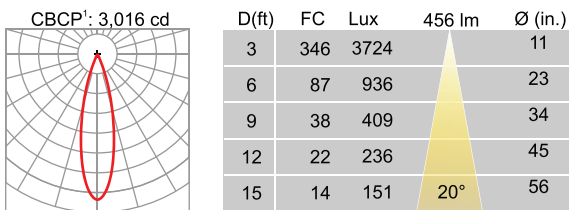
9W VN-Very Narrow Spot, FWHM²= 9°



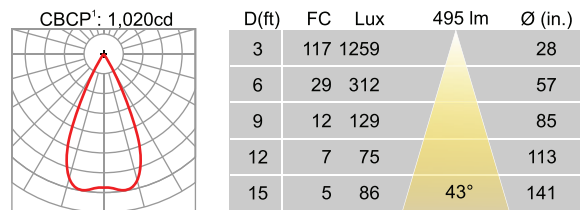
9W NS-Narrow Spot, FWHM²=13°



9W SP-Spot, FWHM²=20°

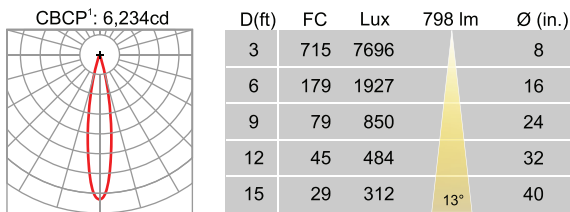


9W FD-Flood, FWHM²=43°

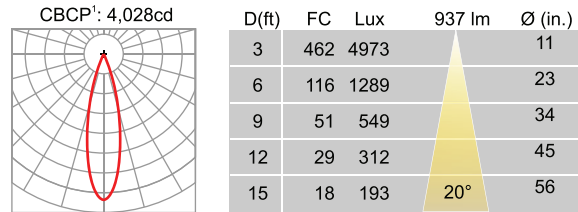


12W

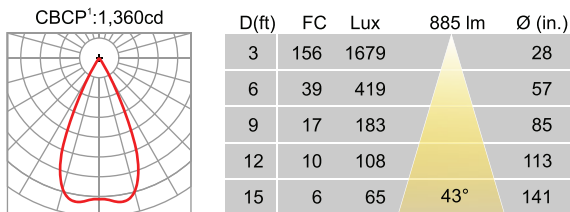
12W NS- Narrow Spot, FWHM²=13°



12W SP- Spot, FWHM²=20°



12W FD-Flood, FWHM²=43°

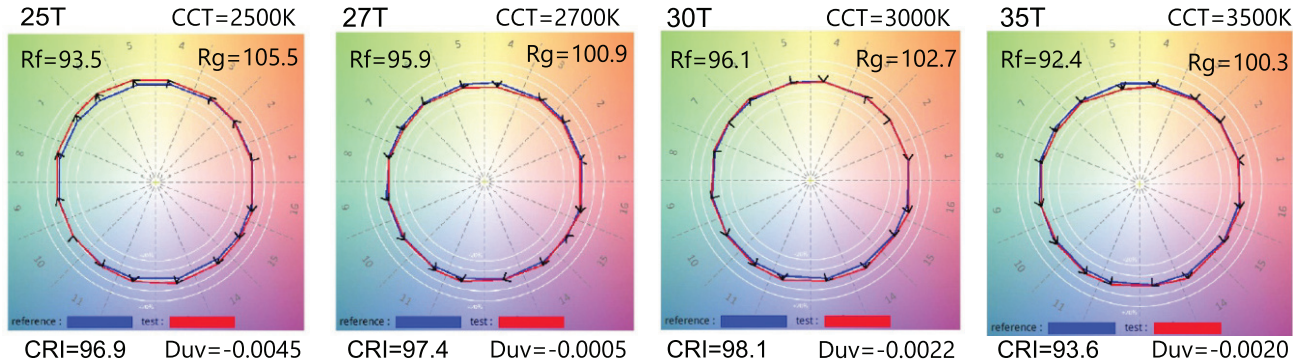


¹ CBCP: Centre Beam Candlepower

² FWHM: Full Width Half Maximum Angle

Colorimetric Data (TM30-15)

Realist Series: Full gamut light source that mimics the colour rendering property of halogen lamps.



Impressionist Series: Colour enhancing light source that renders over-saturated colours

